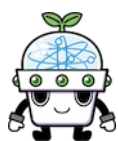


MakeGirls.Moe

Yanghua Jin  
Creating anime  
characters  
using  
AI



京都大学  
KYOTO UNIVERSITY



Department of Intelligence  
Science and Technology

ML! アニメ

8.31 Thu 13:00

Bldg No 7

Lecture Room 1

Prediction results

#	General Tag	Confidence
1.	1girl	95.1%
2.	thighhighs	90.0%
3.	solo	79.2%
4.	red hair	75.0%
5.	long hair	66.4%
6.	breasts	37.0%
7.	gloves	38.0%
8.	weapon	34.0%
9.	heavygloves	28.3%
10.	highheels	14.0%
11.	catlike	10.9%
#	Character Tag	
#	Copyright tag	
#	Rating	
1.	safety	8.0%
2.	questionable	2.3%
3.	explicit	1.2%

Jill-Jënn Vie  
Using Ratings  
and Posters for  
Anime & Manga  
Recommendations

MANGAKI